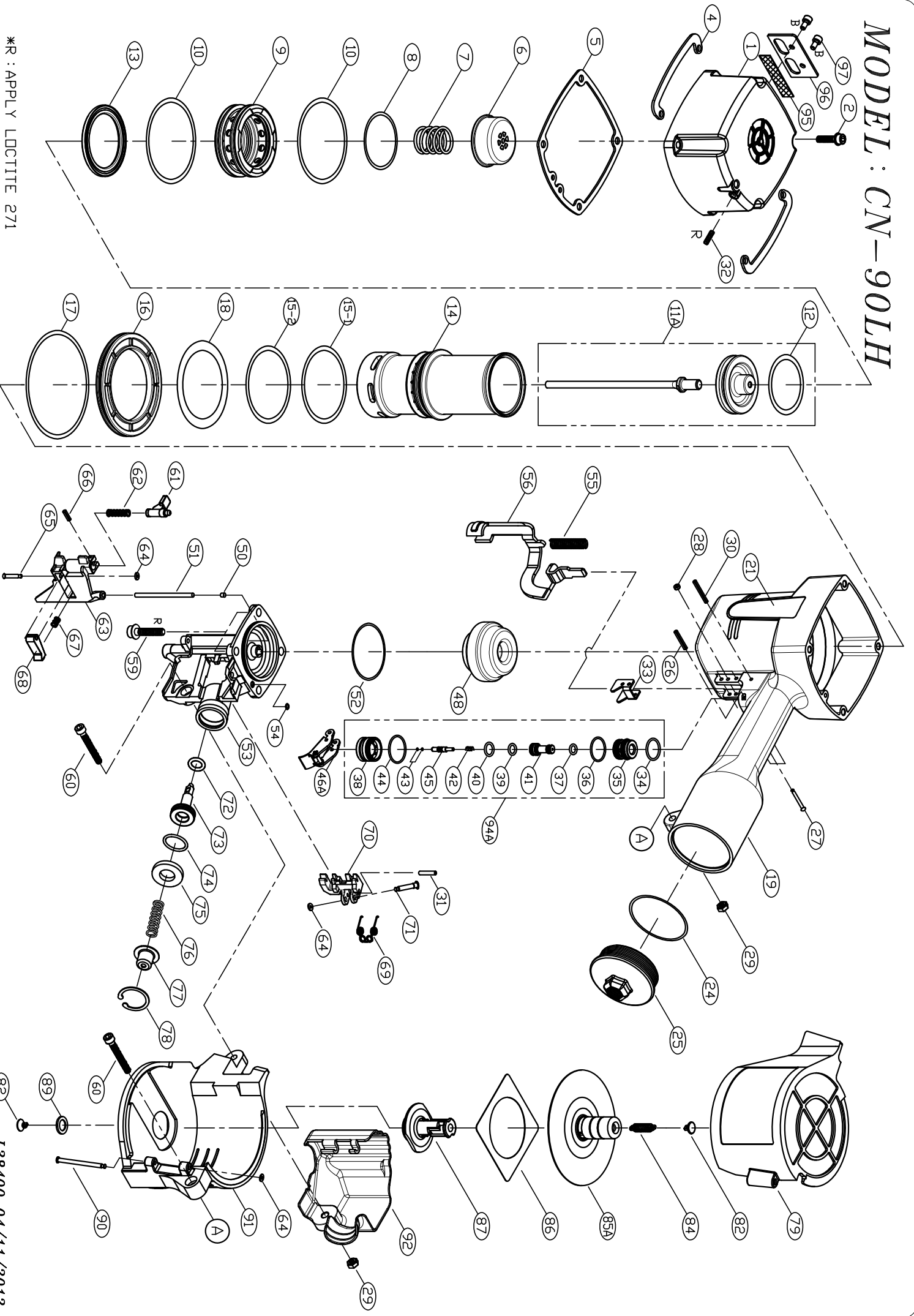


MODEL : CN-90LH



*R : APPLY LOCTITE 271
 *B : APPLY LOCTITE 242

L38400 04/11/2012

PARTS LIST (CN-90LH)

*WHEN ORDERING SPARE PARTS, PLEASE STATE ITEM NO., PART NO. AND DESCRIPTION.

| ITEM | PART NO | DESCRIPTION | QTY | ITEM | PART NO | DESCRIPTION | QTY | ITEM | PART NO | DESCRIPTION | QTY |
|-------|--------------|-----------------------|-----|------|-------------|-------------------------------|-----|------|-------------|-------------------------------------|-----|
| 001 | 36100101 | CAP | 1 | 038 | 23303801 | TRIGGER VALVE CAP | 1 | 076 | 23307601 | COMPRESSION SPRING | 1 |
| 002 | HS06100LW-30 | HEX. SOC. HD. BOLT+SW | 4 | 039 | OR06819M | O RING** | 1 | 077 | 23307701 | SPRING COLLAR | 1 |
| 004 | 36101201 | PROTECTOR | 2 | 040 | OR08819N | O RING** | 1 | 078 | GR2600R | C RING** | 1 |
| 005 | 36101002A | CYLINDER CAP SEAL | 1 | 041 | 23304103 | VALVE PLUNGER | 1 | 079 | 25407901 | MAGAZINE COVER | 1 |
| 006 | 36100201 | PISTON STOPPER | 1 | 042 | 15108301 | SPRING | 1 | 082 | 23308201 | SPRING RECEIVER [^] | 2 |
| 007 | 28000801 | COMPRESSION SPRING | 1 | 043 | OR02514M | O RING** | 2 | 084 | 23308401 | TENSION SPRING | 1 |
| 008 | OR52030N | O RING** | 1 | 044 | OR21015N | O RING** | 1 | 085A | 25408501A | NAIL SUPPORT UNIT | 1 |
| 009 | 28001101 | PISTON HEAD VALVE | 1 | 045 | 23304501 | PLUNGER | 1 | 086 | 23308601 | RUBBER PLATE | 1 |
| 010 | OR68030N | O RING** | 2 | 046A | 23304301A | TRIGGER ASSEMBLY [^] | 1 | 087 | 25408701 | MAGAZINE POST | 1 |
| 011A | 38400501A | DRIVER ASSEMBLY | 1 | 048 | 36100701 | BUMPER | 1 | 089 | 25408901 | POST RETAINER | 1 |
| 012 | OR50253N | O RING** | 1 | 050 | 23305001 | PIN CAP | 1 | 090 | 23309001 | STEP PIN | 1 |
| 013 | 28001201 | SEAL | 1 | 051 | 23305101 | STRAIGHT PIN | 1 | 091 | 25409101 | MAGAZINE | 1 |
| 014 | 38400301 | CYLINDER | 1 | 052 | OR54015N | O RING** | 1 | 092 | 35009201 | CONTACT ARM COVER | 1 |
| 015-1 | OR64431N | O RING** | 1 | 053 | 36100902 | NOSE | 1 | 094A | 23303804A | TRIGGER VALVE ASSEMBLY [^] | 1 |
| 015-2 | OR65040N | O RING** | 1 | 054 | OR04515N | O RING** | 1 | 095 | 38400801 | MUFFLER | 1 |
| 016 | 38400601 | CYLINDER RING | 1 | 055 | 23305501 | COMPRESSION SPRING | 1 | 096 | 38400701 | EXHAUST FILTER | 1 |
| 017 | OR94431N | O RING** | 1 | 056 | 36101101 | CONTACT ARM UNIT | 1 | 097 | HS05080B-12 | HEX. SOC. HD. BOLT | 2 |
| 018 | OR62953N | O RING** | 1 | 059 | HS08125B-30 | HEX. SOC. HD. BOLT | 4 | | | | |
| 019 | 36100801 | BODY | 1 | 060 | HS06100B-35 | HEX. SOC. HD. BOLT | 2 | | | | |
| 021 | 23302101 | PLASTIC LABEL | 2 | 061 | 23306101 | DOOR LATCH | 1 | | | | |
| 024 | OR54431N | O RING** | 1 | 062 | 23306201 | COMPRESSION SPRING | 1 | | | | |
| 025 | 23302501 | END CAP | 1 | 063 | 25406301 | DOOR | 1 | | | | |
| 026 | RP3020S | ROLLED PIN | 1 | 064 | 23306401 | RUBBER WASHER** | 3 | | | | |
| 027 | 23302701 | STEPPED PIN | 3 | 065 | 23306501 | STEP PIN | 1 | | | | |
| 028 | OR01919N | O RING** | 3 | 066 | RP3012S | ROLLED PIN | 1 | | | | |
| 029 | LN0600NB | LOCK NUT | 2 | 067 | 23306701 | COMPRESSION SPRING | 1 | | | | |
| 030 | RP3030S | ROLLED PIN | 1 | 068 | 23306801 | CHECK PAWL | 1 | | | | |
| 031 | RP3016S | ROLLED PIN | 1 | 069 | 23306902 | TORSTON SPRING | 1 | | | | |
| 032 | SS06100B-06 | SET SCREW | 1 | 070 | 23307002 | FEED PAWL | 1 | | | | |
| 033 | 23303301 | CONTACT ARM GUIDE | 1 | 071 | 23307101 | STEP PIN | 1 | | | | |
| 034 | OR15618N | O RING** | 1 | 072 | OR09819N | O RING | 1 | | | | |
| 035 | 23303501 | TRIGGER VALVE | 1 | 073 | 25407301 | FEED PISTON | 1 | | | | |
| 036 | OR17515N | O RING** | 1 | 074 | OR20724N | FEED PISTON O RING** | 1 | | | | |
| 037 | OR05819N | O RING** | 1 | 075 | 23307501 | FEED PISTON STOP | 1 | | | | |

NO : L38400

DATE:04/11/2012