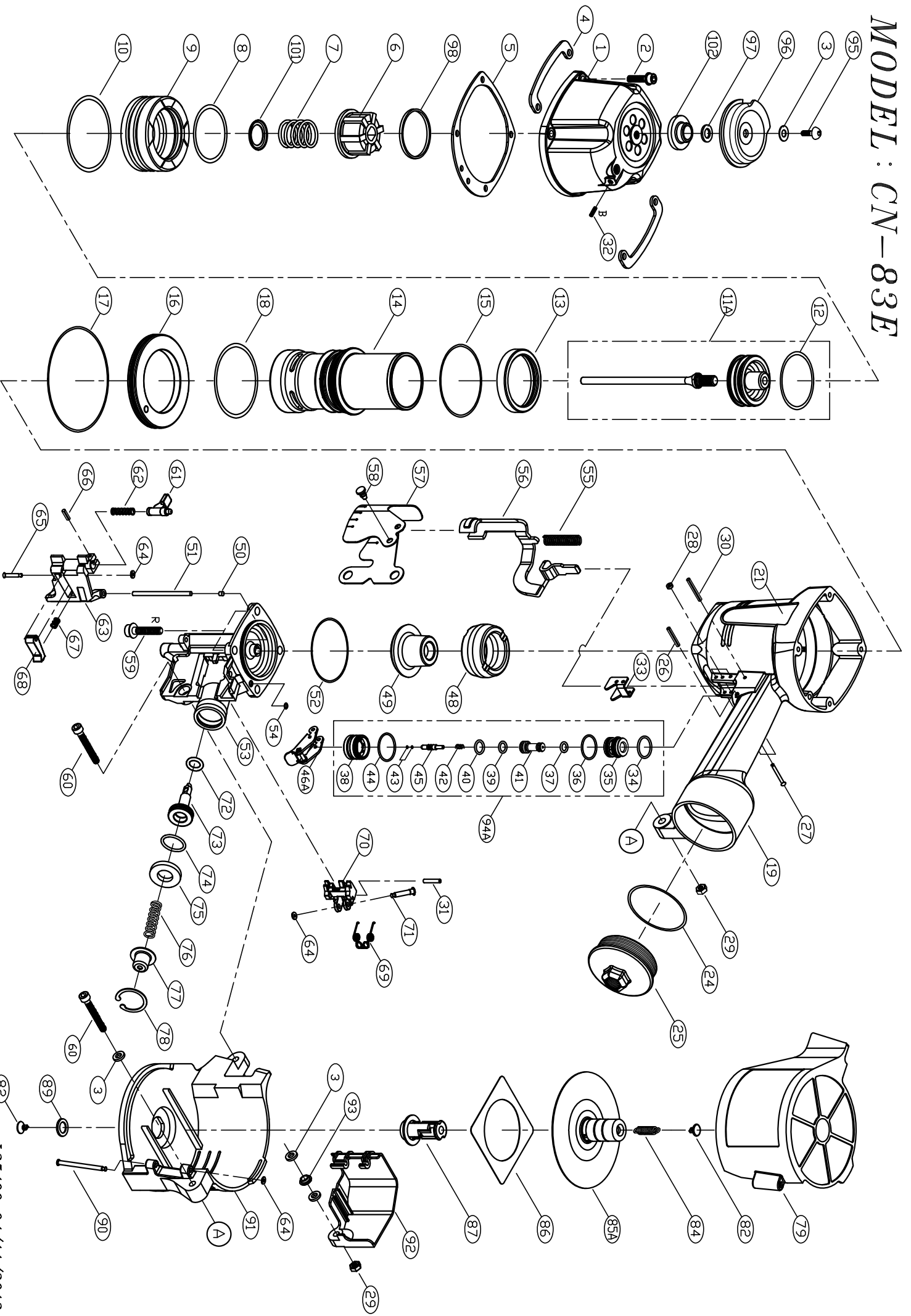


# MODEL: CN-83E



## PARTS LIST (CN-83E)

\*WHEN ORDERING SPARE PARTS, PLEASE STATE ITEM NO., PART NO. AND DESCRIPTION.

ITEM	PART NO	DESCRIPTION	QTY	ITEM	PART NO	DESCRIPTION	QTY	ITEM	PART NO	DESCRIPTION	QTY
001	25400101	CYLINDER CAP UNIT	1	038	23303801	TRIGGER VALVE CAP	1	073	25407301	FEED PISTON	1
002	HS06100LW-30	HEX. SOC. HD. BOLT+SW	4	039	OR06819M	O RING**	1	074	OR20724N	FEED PISTON O RING**	1
003	FW060130B-10	FLAT WASHER	4	040	OR08819N	O RING**	1	075	23307501	FEED PISTON STOP	1
004	23300401	PROTECTOR	2	041	23304103	VALVE PLUNGER	1	076	23307601	COMPRESSION SPRING	1
005	23300502A	CYLINDER CAP SEAL	1	042	15108301	SPRING	1	077	23307701	SPRING COLLAR	1
006	25400601	PISTON STOP	1	043	OR02514M	O RING**	2	078	CR2600R	C RING**	1
007	23300701	COMPRESSION SPRING	1	044	OR21015N	O RING**	1	079	25407901	MAGAZINE COVER	1
008	OR41630N	O RING**	1	045	23304501	PLUNGER	1	082	23308201	SPRING RECEIVER <sup>^</sup>	2
009	25400903	HEAD VALVE PISTON	1	046A	23304301A	TRIGGER ASSEMBLY <sup>^</sup>	1	084	23308401	TENSION SPRING	1
010	OR56030N	O RING**	2	048	23304801	BUMPER"A"	1	085A	25408501A	NAIL SUPPORT UNIT	1
011A	25401101A	PISTON ASSEMBLY**	1	049	23304901	BUMPER"B"	1	086	23308601	RUBBER PLATE	1
012	OR42848M	O RING**	1	050	23305001	PIN CAP	1	087	25408701	MAGAZINE POST	1
013	23301301	CYLINDER SEAL	1	051	23305101	STRAIGHT PIN	1	089	25408901	POST RETAINER	1
014	25401401	CYLINDER	1	052	OR54015N	O RING**	1	090	23309001	STEP PIN	1
015	OR56531N	O RING**	1	053	25405301	NOSE	1	091	25409101	MAGAZINE	1
016	23301601	CYLINDER RING	1	054	OR04515N	O RING**	1	092	23309201	CONTACT ARM COVER	1
017	OR84431N	O RING**	1	055	23305501	COMPRESSION SPRING	1	093	23309301	COLLAR	1
018	OR55657N	O RING**	1	056	25405601	CONTACT ARM UNIT	1	094A	23303804A	TRIGGER VALVE ASSEMBLY <sup>^</sup>	1
019	23301901	BODY	1	057	25405701	DUST COVER	1	095	US06100L-20	UM. HD. BOLT	1
021	23302101	PLASTIC LABEL	2	058	23305801	DUST COVER HOOK	1	096	15100202	EXHAUST COVER	1
024	OR54431N	O RING**	1	059	HS08125B-30	HEX. SOC. HD. BOLT	4	097	15108501	PU RING	1
025	23302501	END CAP	1	060	HS06100B-40	HEX. SOC. HD. BOLT	2	098	25409801	COLLAR	1
026	RP3020S	ROLLED PIN	1	061	23306101	DOOR LATCH	1	101	23310101	HEAD VALVE WASHER	1
027	23302701	STEPPED PIN	3	062	23306201	COMPRESSION SPRING	1	102	25310001	SLEEVE	1
028	OR01919N	O RING**	3	063	25406301	DOOR	1				
029	LN0600NB	LOCK NUT	2	064	23306401	RUBBER WASHER**	3				
030	RP3030S	ROLLED PIN	1	065	23306501	STEP PIN	1				
031	RP3016S	ROLLED PIN	1	066	RP3012S	ROLLED PIN	1				
032	SS06100B-06	SET SCREW	1	067	23306701	COMPRESSION SPRING	1				
033	23303301	CONTACT ARM GUIDE	1	068	23306801	CHECK PAWL	1				
034	OR15618N	O RING**	1	069	23306902	TORSTON SPRING	1				
035	23303501	TRIGGER VALVE	1	070	23307002	FEED PAWL	1				
036	OR17515N	O RING**	1	071	23307101	STEP PIN	1				
037	OR05819N	O RING**	1	072	OR09819N	O RING	1				

NO : L25400

DATE:04/11/2012